



HOW TO RISK MAP, REVIEW AND ACCESS LIONTRUST MULTI-ASSET PORTFOLIOS

Q3 2020

We offer a broad range of target risk portfolios to meet most clients' risk and return objectives. Each multi-asset portfolio is managed by John Husselbee and Paul Kim and has a distinct risk profile expressed in terms of volatility. Higher levels of volatility for a portfolio will usually imply the potential for a higher return and a higher level of risk.

By managing a large number of multi-asset portfolios – 26 through the Liontrust Wealth Solutions Service (WSS) and 22 through the Liontrust Managed Portfolio Service (MPS) – we provide a wide choice to you and your clients. This enables you to blend and customise our portfolios to suit each of your clients depending on their individual risk profiles, objectives and time horizons. Having a broad range of Growth, Income and Dynamic Beta portfolios assists you in helping your clients to head to their financial goals through the accumulation and decumulation phases of their lives.

We also provide a large number of ways in which you can risk map, review and access our portfolios. This document lists the risk profilers and performance

comparators we work with and how you can invest in our portfolios.

Risk profilers and mapping tools

You can risk map our portfolios through: Distribution Technology (Dynamic Planner), Synaptic and Defaqto.

Risk ratings from DT, Synaptic and Defaqto are listed on the next two pages of this document.



Comparators

You can review our portfolios against other managed portfolios through Defaqto, ARC (PCI), FE Transmission and Selectapension.



New ratings – Five Diamond from Defaqto

Liontrust's WSS and MPS Growth, Income and Dynamic Beta portfolios have achieved Five Diamond status from Defaqto for 2020.

The Diamond Rating reflects the performance of a managed/model portfolio or range through a score of one to five based on investment returns and competitiveness in such areas as cost, scale and the longevity of investment managers. Performance is calculated based on measures including risk-adjusted alpha, defined as the ratio of actual returns to those expected from the volatility profile.

A Five Diamond Rating implies the WSS and MPS ranges show strong characteristics based on risk shape, charges, and performance against a relevant peer group.

Based on 1 Nov 2019 figures, looking at managed portfolios available on platforms (Liontrust's MPS portfolios), there are 130 rated ranges from 81 DFM firms and, of these, 35 (27%) achieved Five Diamond status. Of 'direct custody' portfolios – which features Liontrust's WSS proposition – there are 96 rated ranges from 50 DFM firms and 26 of these (27%) are Five Diamond rated.

Liontrust has also retained Five Star Ratings for WSS and MPS for 2020. The Star Ratings were launched in 2000 and cover more than 50 areas within general insurance, wealth management, life and protection, and banking. Star Ratings award a product or proposition a rating of one to five based on its quality.

Where to access our portfolios



Portfolio risk ratings, Q3 2020

WSS



WSS Growth 1	2	2 (Cautious)	2
WSS Growth 2	3	3 (Moderately Cautious)	3
WSS Growth 3	4	3 (Moderately Cautious)	4
WSS Growth 4	5	5 (Balanced)	5
WSS Growth 5	6	7 (Moderately Adventurous)	6
WSS Growth 6	7	8 (Moderately Adventurous)	7
WSS Growth 7	8	10 (Very Adventurous)	8
WSS Growth 8	9	10 (Very Adventurous)	9
WSS Growth 9	9	10 (Very Adventurous)	10
WSS Growth 10	10	10 (Very Adventurous)	10
WSS Income 1	2	2 (Cautious)	2
WSS Income 2	3	3 (Moderately Cautious)	3
WSS Income 3	4	3 (Moderately Cautious)	4
WSS Income 4	5	5 (Balanced)	5
WSS Income 5	6	7 (Moderately Adventurous)	6
WSS Income 6	7	8 (Moderately Adventurous)	7
WSS Dynamic Beta 1	2	2 (Cautious)	2
WSS Dynamic Beta 2	3	3 (Moderately Cautious)	3
WSS Dynamic Beta 3	4	3 (Moderately Cautious)	4
WSS Dynamic Beta 4	5	5 (Balanced)	5
WSS Dynamic Beta 5	6	7 (Moderately Adventurous)	6
WSS Dynamic Beta 6	7	8 (Moderately Adventurous)	7
WSS Dynamic Beta 7	8	9 (Adventurous)	8
WSS Dynamic Beta 8	9	10 (Very Adventurous)	9
WSS Dynamic Beta 9	9	10 (Very Adventurous)	10
WSS Dynamic Beta 10	10	10 (Very Adventurous)	10

Synaptic ratings as at 31.03.20, Defaqto as at 30.06.20, Dynamic Planner as at 30.06.20.

MPS



MPS Growth 1	2	2 (Cautious)	2
MPS Growth 2	3	3 (Moderately Cautious)	3
MPS Growth 3	4	3 (Moderately Cautious)	4
MPS Growth 4	5	5 (Balanced)	5
MPS Growth 5	6	7 (Moderately Adventurous)	6
MPS Growth 6	7	9 (Adventurous)	7
MPS Growth 7	8	10 (Very Adventurous)	8
MPS Growth 8	9	10 (Very Adventurous)	9
MPS Income 1	2	2 (Cautious)	2
MPS Income 2	3	3 (Moderately Cautious)	3
MPS Income 3	4	4 (Moderately Cautious)	4
MPS Income 4	5	6 (Balanced)	5
MPS Income 5	6	7 (Moderately Adventurous)	6
MPS Income 6	7	9 (Adventurous)	7
MPS Dynamic Beta 1	2	2 (Cautious)	2
MPS Dynamic Beta 2	3	3 (Moderately Cautious)	3
MPS Dynamic Beta 3	4	3 (Moderately Cautious)	4
MPS Dynamic Beta 4	5	5 (Balanced)	5
MPS Dynamic Beta 5	6	7 (Moderately Adventurous)	6
MPS Dynamic Beta 6	7	9 (Adventurous)	7
MPS Dynamic Beta 7	8	10 (Very Adventurous)	8
MPS Dynamic Beta 8	9	10 (Very Adventurous)	9

Who to contact for more information

We take pride in the quality of service we provide you and your clients, including dedicated sales, marketing and operations support.

If you would like any further information about our target risk multi-asset portfolios, please contact one of our team below.



Mark Keogh

Head of Sales - Multi-Asset

Email: mark.keogh@liontrust.co.uk

Direct Line: +44 (0)20 7412 1774

Mobile: +44 (0)7826 210966



Carol Hyner

Regional Sales Manager - South East & East Anglia

Email: carol.hyner@liontrust.co.uk

Mobile: +44 (0)7741 064501

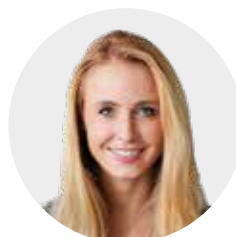


Graeme Southern

Regional Sales Manager - North of England & Scotland

Email: graeme.southern@liontrust.co.uk

Mobile: +44 (0)7580 901255



Katie Hammond

UK Sales Support - Multi-Asset

Email: katie.hammond@liontrust.co.uk

Direct Line: +44 (0)20 7412 1785

Mobile: +44 (0)7774 545629

 Client Services: +44 (0)20 7412 1777  clientservices@liontrust.co.uk  liontrust.co.uk

Key risks

Past performance is not a guide to future performance. Do remember that the value of an investment and the income generated from them can fall as well as rise and is not guaranteed, therefore, you may not get back the amount originally invested and potentially risk total loss of capital. The portfolios' investments are subject to normal fluctuations and other risks inherent when investing in securities.

Any performance shown represents model portfolios which are periodically restructured and/or rebalanced. Actual returns may vary from the model returns. There is no certainty the investment objectives of the portfolio will actually be achieved and no warranty or representation is given to this effect. The portfolios therefore should be considered as a medium to long-term investment.

Disclaimer

This document is issued by Liontrust Investment Partners LLP (2 Savoy Court, London WC2R 0EZ), authorised and regulated in the UK by the Financial Conduct Authority (FRN 518552) to undertake regulated investment business.

It should not be construed as advice for investment in any product or security mentioned, an offer to buy or sell investments mentioned, or a solicitation to purchase securities in any company or investment product. Examples of funds are provided for general information only to demonstrate our investment philosophy.

The document contains information and analysis that is believed to be accurate at the time of publication, but is subject to change without notice. Whilst care has been taken in compiling the content of this document, no representation or warranty, express or implied, is made by Liontrust as to its accuracy or completeness, including for external sources (which may have been used) which have not been verified.

All the information provided should be treated as confidential, information may constitute material non-public information, the disclosure of which may be prohibited by law, and the legal responsibility for its use is borne solely by the recipient. If this presentation has been produced for a professional audience it should not be distributed to, or relied upon by, retail investors.

It should not be copied, faxed, reproduced, divulged or distributed, in whole or in part, without the express written consent of Liontrust.

Always research your own investments and (if you are not a professional or a financial adviser) please consult suitability with a regulated financial adviser before investing. Any decision to invest should be always based on the relevant brochure. It contains important information which should be read before investing in any portfolio and they can be obtained free of charge directly from Liontrust or from www.liontrust.co.uk. 2020.11 [18/613]

All our documents are printed on recycled paper or paper from a sustainable source in accordance with either the FSC, PEFC or EU Ecolabel criteria to help keep our environmental impact to a minimum.