

LIONTRUST SUSTAINABLE FUTURE CAUTIOUS MANAGED FUND



Fund sustainability and impact report: Q4, 2021



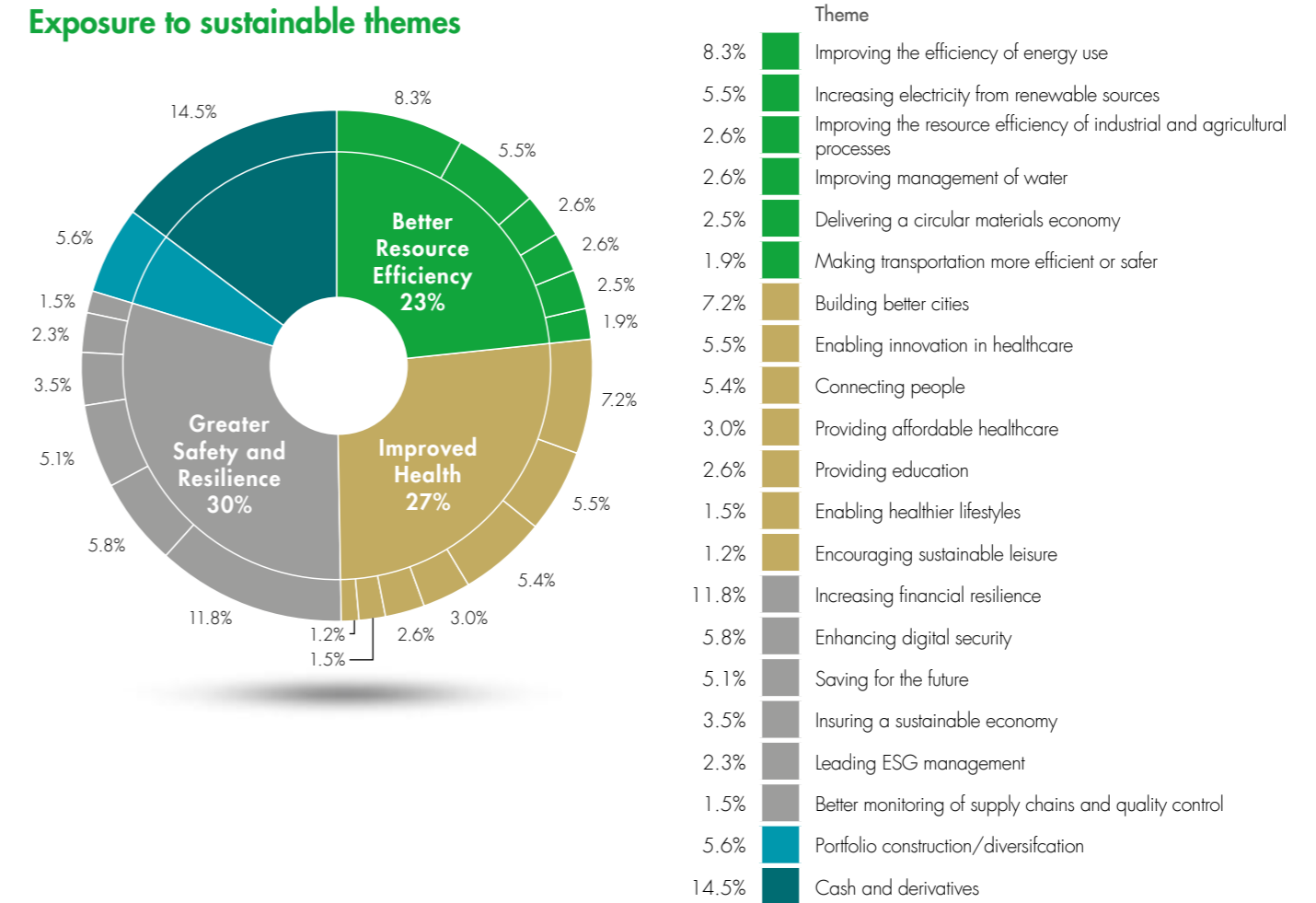
Contents

Exposure to positive sustainability investment trends	3–4
Alignment with UN Sustainable Development Goals	5
Assessment of how sustainable companies are: Sustainability Matrix Rating	6
Climate change: portfolio data on carbon, solutions and fossil fuels	7
Weight of holdings owning fossil fuels	8
Fund holdings	9–36
Additional ESG metrics	37–39

Exposure to positive sustainability investment trends

We look to invest in companies having a positive impact on our economy by making it either cleaner, healthier or safer. Exposure to 19 of our 20 Sustainable investment themes is shown below. For more detail on the sustainable themes, see liontrust.co.uk/sustainable

Exposure to sustainable themes



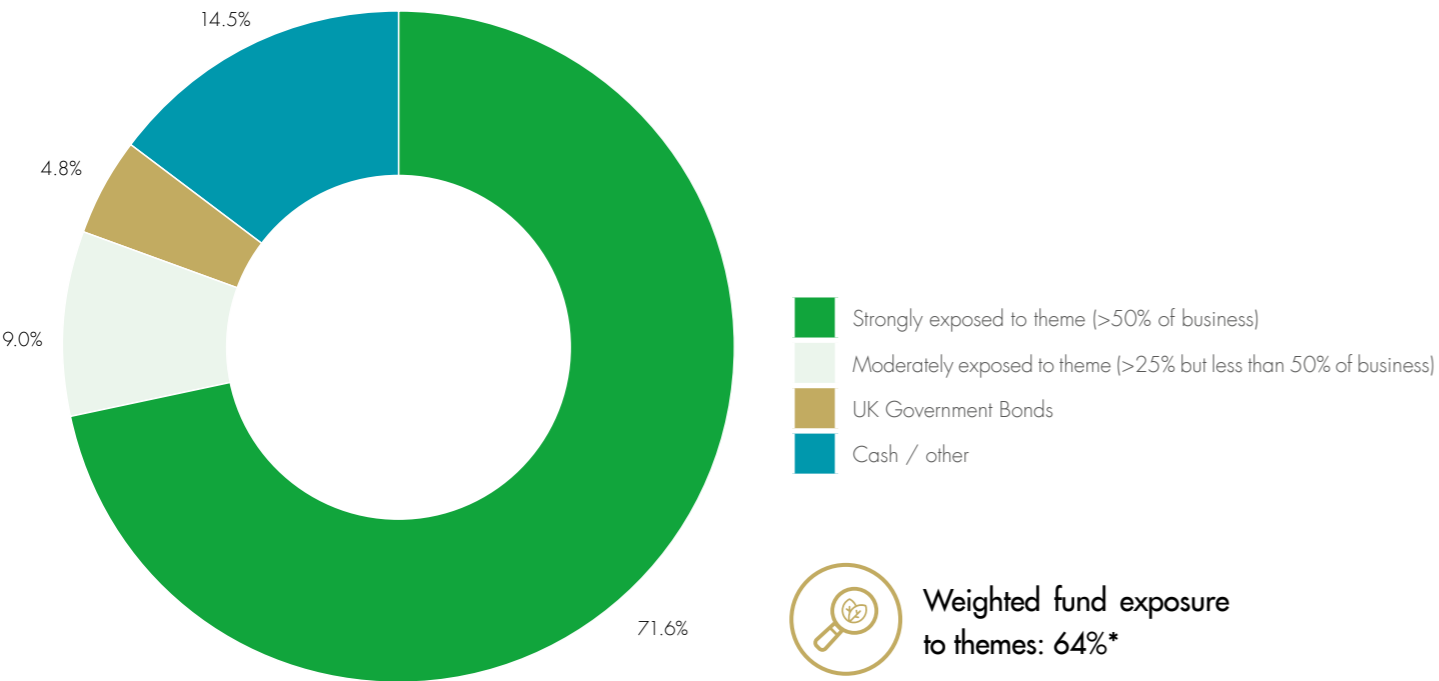
Source: Liontrust / Factset, 31 December 2021

Exposure to positive sustainability investment trends

Sustainable investment themes: how much of business is exposed

This analysis shows what proportion of companies held in the fund is exposed to the Sustainable investment themes: 71.6% of the fund is invested in companies that are strongly exposed to our themes

(which means more than 50% of the business's revenues); a further 9.0% of the fund is invested in companies that are moderately exposed to our themes, which means between 25% and 50% of revenues.



Source: Liontrust / Factset, 31 December 2021. *Sales weighted exposure to themes from companies in the fund

Alignment with UN Sustainable Development Goals

This analysis shows how the Sustainable investment themes are linked to the United Nations' Sustainable Development Goals (SDGs).

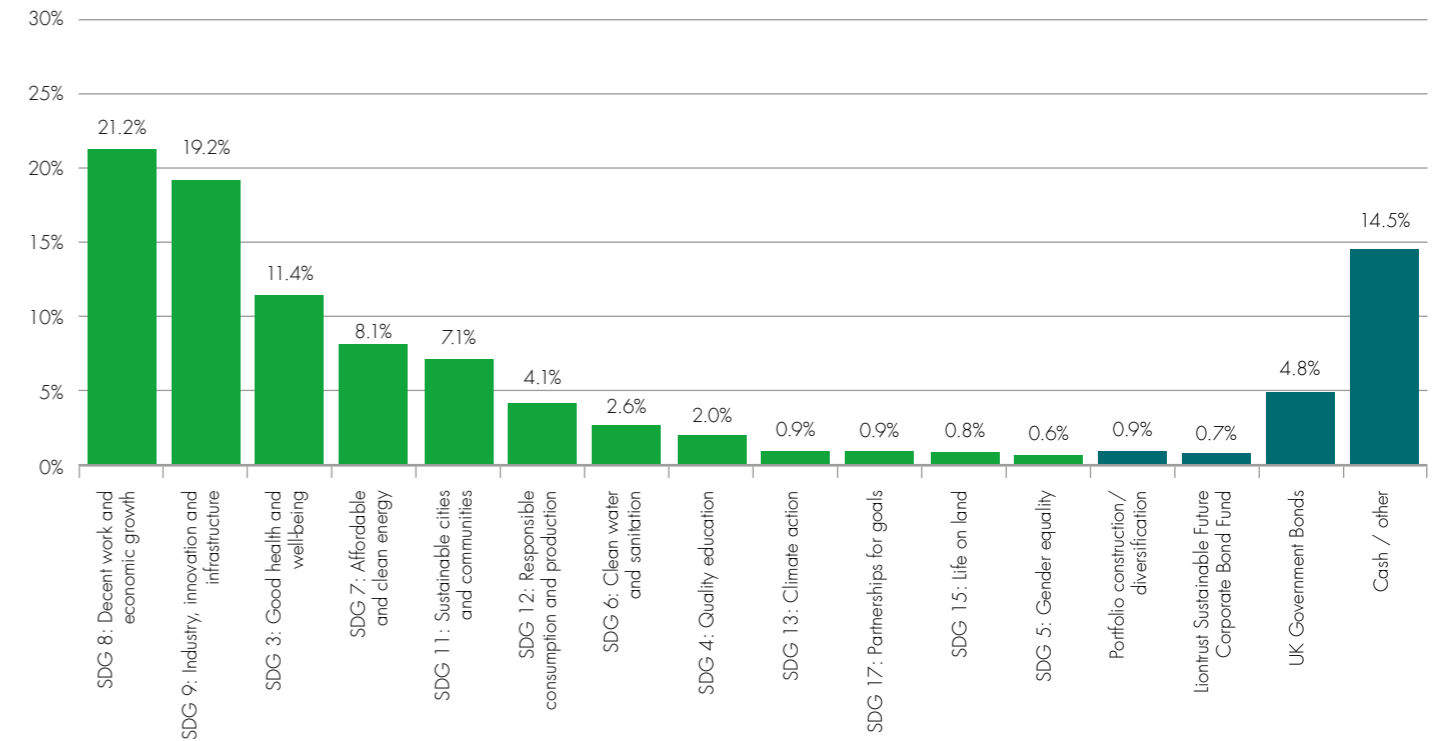
available in the SF Annual Review 2020 on pages 27-33: www.liontrust.co.uk/sustainable

The fund has most exposure to SDG 8: Decent work and economic growth (21.2%); SDG 9: Industry, innovation and infrastructure (19.2%) and SDG 3: Good health and well-being (11.4%).

The fund is exposed to 12 of the 17 UN SDGs.

All of the Sustainable investment themes are linked to SDGs and the underlying Key Performance Indicator they relate to have been identified in the SDG text. A more detailed discussion on impact and how the Sustainable themes are aligned with the SDGs is

Sustainable investment themes mapped to UN Sustainable Development Goals (% of fund exposure)

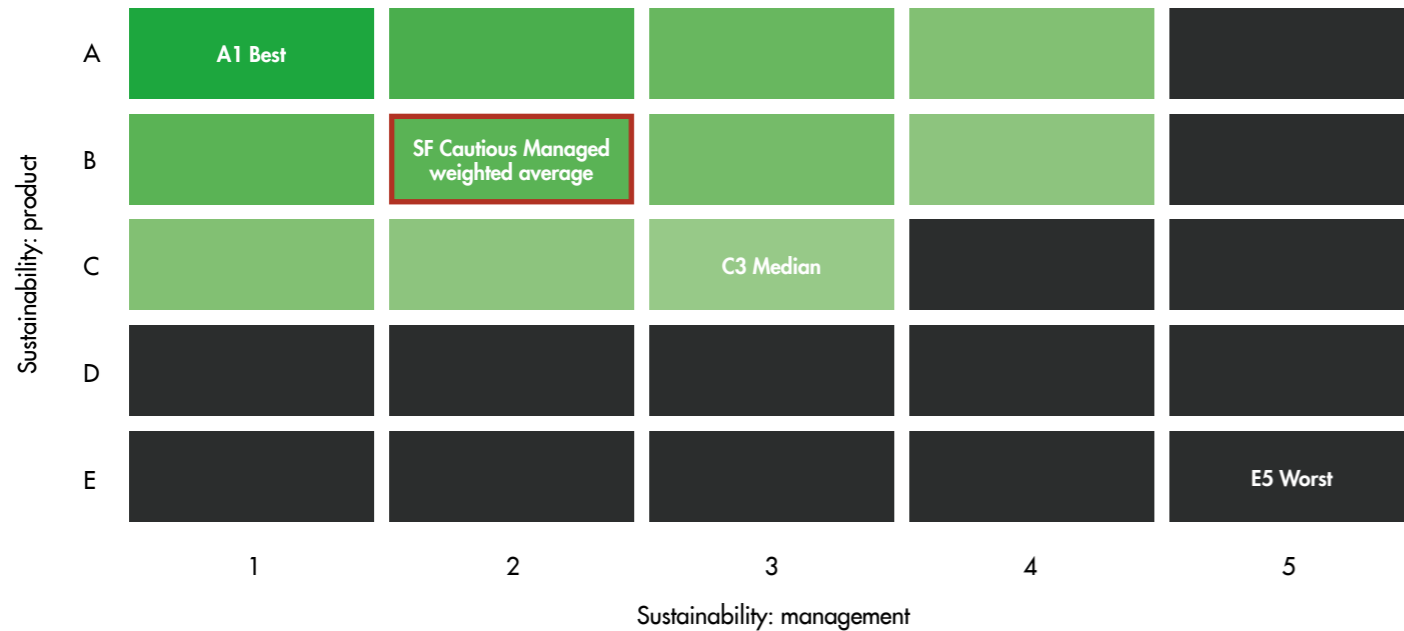


Source: Liontrust / Factset, 31 December 2021

Assessment of how sustainable companies are: Sustainability Matrix Rating

We assess every company using our proprietary Sustainability Matrix Rating, which measures how sustainable the products and services are as well as how well they manage the material environmental, social and governance (ESG) matters related to their business.

The weighted average Sustainability Matrix rating for the fund is B2 (marked in red in the figure below). This shows the fund is invested in companies whose products and services are more sustainable and whose management of ESG aspects of their business is better than the market it invests in. There are no companies in the fund which are rated in the ineligible grey area of the Sustainability matrix.

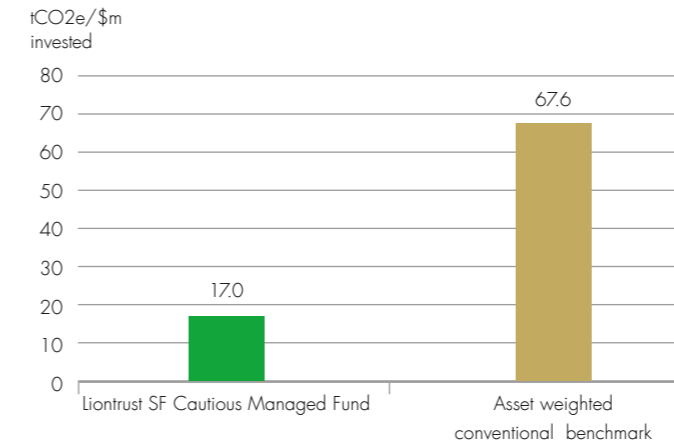


Source: Liontrust / Factset, 31 December 2021.

Climate change: portfolio data on carbon, solutions and fossil fuels

Carbon emissions of fund compared to conventional benchmark

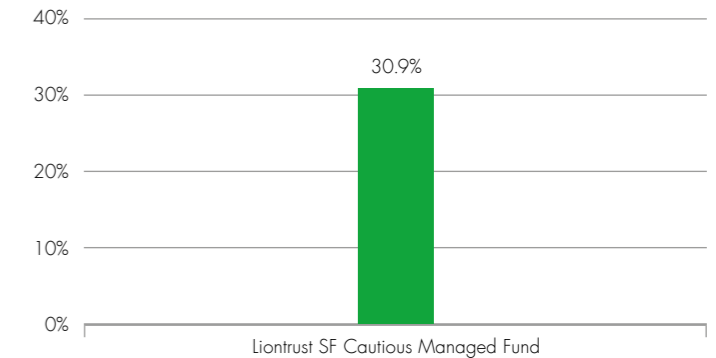
This analysis shows the investments in the fund emit 74.8% less carbon (tCO₂e) than the market it invests in. This independent analysis includes direct emissions forming scope 1 and scope 2 emissions only*.



Source: MSCI Carbon Analytics / Liontrust as at 31 December 2021: tCO₂e/\$m invested using weighted single-strategy funds as proxy for multi-asset fund and compared to same asset allocation in conventional benchmark. Carbon emissions data is available for 87.7% of the fund and 98.6% of the asset-weighted conventional benchmark. *Scope 1 emissions are direct greenhouse (GHG) emissions that occur from sources controlled or owned by an organisation (associated with fuel combustion in boilers, furnaces, vehicles and so on). Scope 2 emissions are indirect GHG emissions associated with the purchase of electricity, steam, heat, or cooling. Scope 3 (all indirect emissions, not included in scope 2, that occur in the value chain of the reporting company) is important but not currently available in a consistent data set with enough coverage to be included in this independent analysis.

Companies offering clean technology solutions

This analysis shows that the fund holds 30.9% of companies that MSCI has determined are providing clean technology solutions.



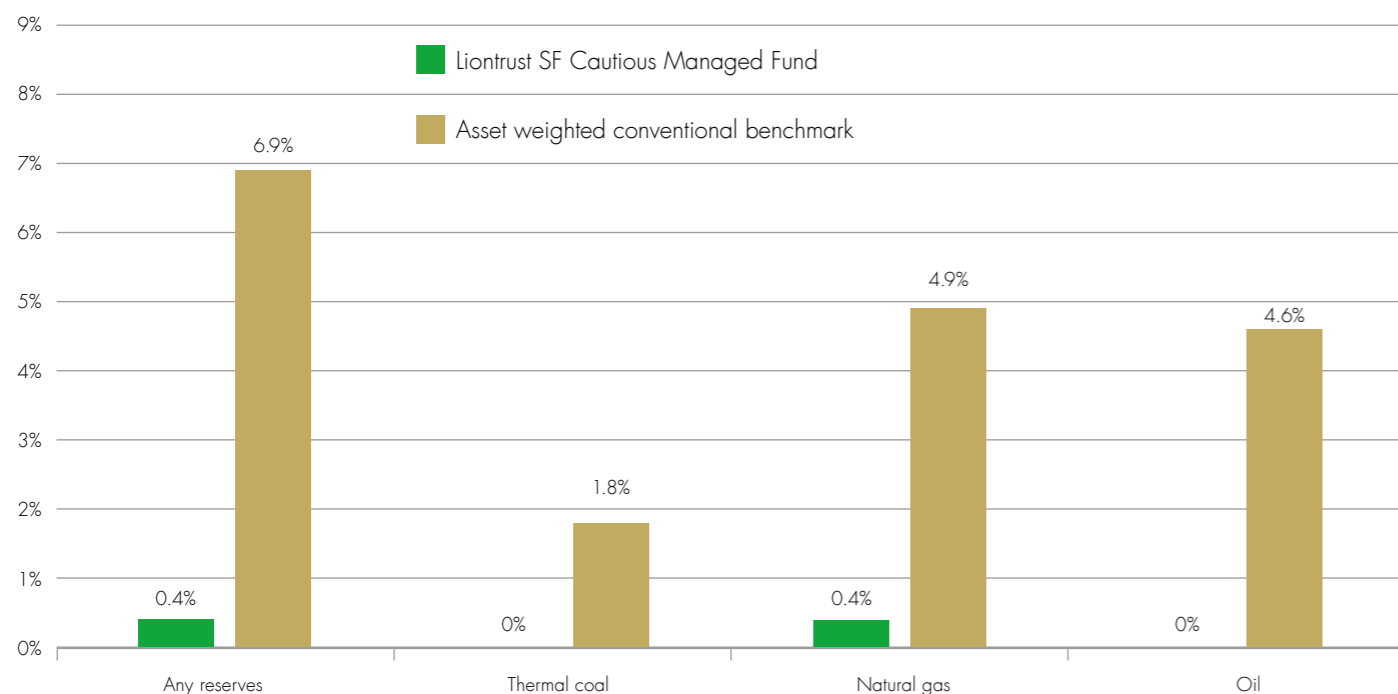
Source: MSCI Carbon Analytics / Liontrust as at 31 December 2021.

Weight of holdings owning fossil fuels

Weight of companies owning fossil fuel reserves

This analysis shows the fund has very low exposure to companies that own fossil fuel reserves: 0.4% exposure to any fossil fuel reserves; 0% exposure to thermal coal reserves; 0.4% exposure to natural gas reserves; and 0% exposure to oil reserves.

There is one company in the fund, SSE PLC, that owns any fossil fuels but this is a very small part of its business (less than 5% of sales) and its investments are focused on delivering ultra-low carbon electricity from renewables.



Source: MSCI Carbon Analytics / Liontrust as at 31 December 2021: using weighted single-strategy funds as proxy for multi-asset fund and compared to same asset allocation into conventional benchmark. Carbon emissions data is available for 87.7% of the fund and 98.6% of the asset-weighted conventional benchmark and our exposure in the chart above should be seen in that context.

All Fund holdings

Alphabetical list showing all holdings in the fund along with their sector, our Sustainability Matrix Rating and Sustainable investment theme.

Equity

Company name	Sector	Sustainability Matrix	Sustainable investment theme	What this company does and how it contributes to a more sustainable economy
3i Group Plc	Financials	C1	Increasing financial resilience	3i is a private equity company that invests predominantly in retail, infrastructure, healthcare, technology and industrial. It has strong responsible investment policies and firm exclusion on no-go areas.
Abcam Plc	Health Care	A3	Enabling innovation in healthcare	Abcam provides high-quality research tools to enable the progression of life science research. Science has a reproducibility problem: a significant proportion of experiments are not reproducible by others, or indeed by the original scientist. Part of the issue is the quality of the tools /inputs used. By continually refining its product portfolio to be the highest quality, Abcam ensures scientists get the best out of their research work. It also provides supporting documentation and guidance to ensure it is used and interpreted correctly.
Adobe Inc.	Information Technology	B2	Improving the efficiency of energy use	Digital transformation is a secular driving force in our economy and Adobe was the true pioneer of the transformation to cloud, using the highly loyal customer base on Adobe creative to shift to a cloud-based, subscription-based model.
Adyen N.V.	Information Technology	B2	Enhancing digital security	Adyen makes transacting online safer and easier. The company has one platform and is focused purely on organic growth. Returns are best in class and the culture is fantastic.
AJ Bell Plc	Financials	B3	Saving for the future	AJ Bell provides a low cost, easy to use investment platform for individuals and financial advisers to manage their investments and savings. Investment platforms such as AJ Bell have democratized the industry, which previously was only accessible for the wealthy.
Alphabet Inc.	Communication Services	B3	Providing education	Alphabet is an unusual case, 82% of revenues come from advertising, which would normally be C rated. However, our view is that this powers its core Search business and YouTube, which most users do not pay for but receive the benefits of having the world's information indexed. YouTube is becoming an increasingly important tool for education with 77% of users claiming to have used it to learn a new skill in 2020.

Source: Liontrust / Factset, 31 December 2021

All Fund holdings

Company name	Sector	Sustainability Matrix	Sustainable investment theme	What this company does and how it contributes to a more sustainable economy
American Tower Corporation	Real Estate	B2	Connecting people	American Tower (AMT) is a REIT that owns, operates and develops wireless communications and broadcast towers worldwide, with a portfolio of around 214,000 communications sites. AMT will benefit from continued growth in communications: 5G, small cells and IoT will increase demand for telecoms infrastructure, and network densification is key.
Ansys, Inc.	Information Technology	B2	Improving the resource efficiency of industrial and agricultural processes	Simulation software is the process of modelling a real-world phenomenon with a set of mathematical formulae. Essentially, it is a computer programme that allows the user to observe an operation through simulation without physically performing that operation. The virtual testing and monitoring enables higher safety and quality standards in the design, development and maintenance of our products and Ansys is the global leader in complex multi-physics real-world simulations.
Aquila European Renewables Income Fund Plc	Energy	A3	Increasing electricity from renewable sources	Aquila European Renewables Income fund is a sustainable infrastructure fund which invests in renewable energy assets (wind, solar and existing small hydro concessions) in Europe.
ASML Holding N.V.	Information Technology	B1	Improving the efficiency of energy use	ASML remains at the forefront of improving semiconductor fabrication through EUV development and holistic lithography. Smaller process nodes means more chips per wafer in manufacture and smaller, cheaper, more reliable, more energy efficient and more powerful end products. These advances in semiconductor manufacturing underpin improvements in Logic Chips and the ever-greater processing power of our computers, which in turn drives almost every aspect of our technological, scientific and commercial breakthroughs.
Atrato Onsite Energy Plc	Financials	A3	Increasing electricity from renewable sources	Atrato Onsite Energy is a renewable energy infrastructure fund that installs solar modules on industrial use roofs in the UK. They contract the sale of electricity from this to the willing occupier. The result is more lower carbon electricity generated and lower power price costs for their customers.
Autodesk, Inc.	Information Technology	B1	Improving the resource efficiency of industrial and agricultural processes	Autodesk provides software for construction, manufacturing and entertainment industries. Its products effectively lead the digitisation of these industries, which in turn directly reduces resource wastage, wasted time and watered costs within these industries. The Building Information Management (BIM) secular trend in construction is being driven by Autodesk's market leading products.

Source: Liontrust / Factset, 31 December 2021

All Fund holdings

Company name	Sector	Sustainability Matrix	Sustainable investment theme	What this company does and how it contributes to a more sustainable economy
Avanza Bank Holding AB	Financials	B1	Saving for the future	Avanza is an investment platform helping people save for their retirement in a cost effective manner in Sweden. They are particularly proactive on sustainable investment and in promoting inclusion of women on their platform, with targets to increase female participation further.
Bright Horizons Family Solutions Inc.	Consumer Discretionary	A2	Providing education	Bright Horizons provides high-quality educational services, chiefly for 0-4 year olds, that are paid for by the employees but subsidised as part of benefits. This gives the opportunity for full-time working households to continue their careers, while ensuring their children are in the best possible setting.
Cadence Design Systems, Inc.	Information Technology	B2	Improving the efficiency of energy use	Cadence provides EDA, technology that designs and optimises semiconductor chips. Its technology facilitates innovation behind many of our themes related to the digitalisation of the global economy.
Canadian Solar Infrastructure Fund, Inc.	Utilities	A4	Increasing electricity from renewable sources	Canadian Solar Infrastructure fund is the leading Japanese solar infrastructure fund. It owns and operates large scale Solar projects, which were initiated post the Japanese earthquake in 2011, to replace nuclear capacity in Japan. It is providing clean and safe energy and displacing dangerous dirty sources of power, such as nuclear and oil.
Cellnex Telecom S.A.	Communication Services	B3	Connecting people	Cellnex is a leader in telco and broadcasting infrastructure in Europe and enables MNOs to use its infrastructure rather than have its own footprint of passive infrastructure, which can free up MNO balance sheets and increase investment in active investments. 5G will further boost network capacity and density, necessary for the continued exponential growth in data and our reliance on the digital economy.
Compass Group Plc	Consumer Discretionary	C1	Leading ESG management	Compass Group provides catering services globally; it serves 5.5 billion meals a year and employs 600k people across 55k client locations. We are holding the company for the way it manages its key Environmental, Social and Governance issues, which we believe are best in class and leads to superior growth and margin progression over the long run.

Source: Liontrust / Factset, 31 December 2021

All Fund holdings

Company name	Sector	Sustainability Matrix	Sustainable investment theme	What this company does and how it contributes to a more sustainable economy
Countryside Properties Plc	Consumer Discretionary	B1	Building better cities	A UK housebuilder that is distinctive in its focus on mixed communities of affordable, rental and open market. It also leads in modern methods of construction, reducing the time of construction and disruption during building. The company has generated strong returns on capital and growth from persistent shortfall in supply versus demand for quality housing in the UK.
Crest Nicholson Holdings Plc	Consumer Discretionary	B3	Building better cities	Crest Nicholson builds high-quality homes in the South East of England. These help to meet the deficit in supply and improve the overall energy efficiency and quality of housing in the UK. The company slightly lost its way in 2018-2020 but has a very focused new management, which we believe will align superior financial performance to strong performance on sustainability factors.
Croda International Plc	Materials	B1	Improving the efficiency of energy use	Croda is a speciality chemical company based in Yorkshire. The company focuses on surface chemistry and its compounds help to increase energy and resource efficiency, reduce the use of toxic substances and improve the efficacy of pharmaceuticals.
CSL Limited	Health Care	A2	Providing affordable healthcare	CSL is the leading global plasma manufacturer. It collects donations from a network of more than 250 plasma centres and uses these in a 9-12month process to extract and manufacture a range of innovative therapies. It is also the global number 2 flu vaccination player.
Daikin Industries, Ltd.	Industrials	B2	Improving the efficiency of energy use	Daikin is the global leader in energy-efficient air conditioners and Heat Pumps. Its products significantly cut carbon emissions, in a sector that is a key contributor to global emissions. Daikin's technologies cut emissions by around two-thirds versus traditional technologies.
DFS Furniture Plc	Consumer Discretionary	C1	Leading ESG management	DFS is the UK's largest sofa retailer with around 35% market share; it is the biggest in both online and in-store sales with an omni-channel experience. DFS is different from other furniture retailers in that it manufactures around a third of its own product and owns a delivery fleet. This enables a higher-quality product and customer experience, with a faster and more consistent delivery service.

Source: Liontrust / Factset, 31 December 2021

All Fund holdings

Company name	Sector	Sustainability Matrix	Sustainable investment theme	What this company does and how it contributes to a more sustainable economy
DocuSign, Inc.	Information Technology	A2	Delivering a circular materials economy	DocuSign is the global leader in e-signatures. It is digitalising the final component of the document creation process, saving key resources, such as paper and energy.
Downing Renewables & Infrastructure Trust Plc	Financials	A3	Increasing electricity from renewable sources	Downing Renewable and Infrastructure Trust is a fund that owns renewable electricity generation assets such as wind, solar, micro-hydro power, and plans to invest in Geothermal power. The assets are located in UK and Nordics (50% each is broad target). These types of fund play a crucial role in owning renewable assets which are displacing higher carbon alternatives off the electricity grid helping us move towards an ultra-low carbon economy. This frees up capital for the developers to recycle and increase renewable electricity further in the energy transition.
Ecolab Inc.	Materials	B1	Improving management of water	Ecolab is the global leader in improving the management of water across the hospitality and industrial sectors.
Equinix, Inc.	Real Estate	B2	Improving the efficiency of energy use	Equinix operates data centres and offers colocation and interconnection services globally. Data centres provide the backbone to how we store and process data and underpin the functioning of the digital economy, which can drive improvements in making the real economy cleaner, healthier and safer. However, it has been estimated data centres are set to account for 3.2% of total global carbon emissions, and a fifth of global electricity by 2025. Equinix is at the forefront of innovating and driving technologies that increase the efficiency of data centres and has a long-term goal of using 100% clean and renewable energy.
Evotec SE	Health Care	A2	Enabling innovation in healthcare	Evotec reduces discovery and development costs for pharma and biotech companies by allowing them to outsource these services and switch them from fixed to variable costs. Evotec also increases the speed of innovation by enabling parallel progress of science rather than serial.

Source: Liontrust / Factset, 31 December 2021

All Fund holdings

Company name	Sector	Sustainability Matrix	Sustainable investment theme	What this company does and how it contributes to a more sustainable economy
First Republic Bank	Financials	B1	Increasing financial resilience	First Republic Bank is an exceptionally well-managed business that funds loans from savings. It has a good record of ensuring the quality of loans is high and clearly understands its customers well, which means low loan losses. Its customer service is excellent and as a result, it has the highest Net Promoter Scores in their industry (twice that of US banking peers).
GB Group Plc	Information Technology	B3	Enhancing digital security	GB Group focuses on solutions helping to reduce fraud and companies to meet their compliance obligations.
GlaxoSmithKline Plc	Health Care	A2	Providing affordable healthcare	GlaxoSmithKline is a large UK pharmaceutical conglomerate. It manufactures and markets branded pharmaceutical and vaccine therapeutics. It also has a Consumer Healthcare business, which is readying for a spin off in 2022.
Greencoat Uk Wind Plc	Utilities	A2	Increasing electricity from renewable sources	Greencoat UK Wind PLC is a sustainable infrastructure fund that owns and operates renewable energy electricity generation assets. These assets are split across 38 different projects, which are wind generation assets (70% onshore and 30% offshore) in UK (England, Scotland, Wales and Northern Ireland). These renewable assets have a generating capacity of 1,209 MW. This fund plays a crucial role in owning renewable assets which are displacing higher carbon alternatives off the electricity grid helping us move towards an ultra-low carbon economy.
Halma Plc	Information Technology	A1	Better monitoring of supply chains and quality control	Halma is a holding company for 46 distinct businesses in process safety, infrastructure safety, environmental analysis, and medical sectors. The Halma model is to acquire these niche businesses and enable them to grow through support around digital transformation, talent and culture, finance legal and risk, marketing and comms, or international expansion.
Hargreaves Lansdown Plc	Financials	B3	Saving for the future	Hargreaves provides a low-cost way for individuals to manage their investments and savings. There is a huge savings gap in the UK and investment platforms help democratise investments by giving individuals access to funds and shares, for which they would otherwise require a financial adviser.

Source: Liontrust / Factset, 31 December 2021

All Fund holdings

Company name	Sector	Sustainability Matrix	Sustainable investment theme	What this company does and how it contributes to a more sustainable economy
Helios Towers Plc	Communication Services	A2	Connecting people	Helios Towers owns and operates telecommunications towers and related passive infrastructure. The firm provides tower site space to large MNOs and other fixed wireless operators, who in turn provide wireless voice and data services to end-user subscribers.
Home REIT Plc	Real Estate	A1	Building better cities	The company acquires and creates new high-quality homes for homeless people. There is a critical shortage of secure, long-term accommodation for this vulnerable group. The funding is there from central government and local authorities have an obligation to provide it. Home REIT fills the gap by using capital to offer 25-year leases to charities and housing associations at much lower cost than the comparative private or B&B provision.
Illumina, Inc.	Health Care	A2	Enabling innovation in healthcare	The company provide technologies that enable our understanding of the genome. This has great implications for our understanding and treatment of disease, as well as much wider applications such as agriculture.
Infineon Technologies Ag	Information Technology	B2	Improving the efficiency of energy use	Infineon is a German company that produces efficient power management chips, which are used across the economy in electronics, particularly in computing and mobiles as well as autos and industrial automation. It is the largest player in power semi-conductors, which are key for electrification, so they are well positioned here.
Intertek Group Plc	Industrials	B2	Better monitoring of supply chains and quality control	Intertek provides services from auditing and inspection, training, advisory, quality assurance and certification to a broad range of global companies.
Intuit Inc.	Information Technology	B2	Increasing financial resilience	Intuit provides accounting software to individuals, small businesses and the self employed, helping them manager their money, reduce their debt and file taxes.
Intuitive Surgical, Inc.	Health Care	A2	Enabling innovation in healthcare	Intuitive is committed to advancing patient care in surgery and other acute medical interventions. The company is focused on innovating to enable physicians and healthcare providers to improve the quality of and access to minimally invasive care.

Source: Liontrust / Factset, 31 December 2021

All Fund holdings

Company name	Sector	Sustainability Matrix	Sustainable investment theme	What this company does and how it contributes to a more sustainable economy
IP Group Plc	Financials	A2	Enabling innovation in healthcare	IP Group develops innovative technologies, the majority of which aim to improve health or resource efficiency. By building on new, creative ideas from university research, the organisation helps raise funding to create new companies, new jobs, and ultimately world changing innovation.
IQVIA Holdings Inc	Health Care	A3	Providing affordable healthcare	IQVIA connects healthcare organisations and patients with data in an effective way to ensure faster decision making on healthcare outcomes.
JLEN Environmental Assets Group Limited	Financials	A2	Increasing electricity from renewable sources	John Laing Environmental Assets forms part of our sustainable infrastructure portfolio. This fund invests in renewable energy and waste treatment facilities, principally in the UK.
Keyence Corporation	Information Technology	B3	Improving the resource efficiency of industrial and agricultural processes	Keyence is the global leader in sensor and vision technology. Its products significantly reduce production errors and faults, reduce energy consumption and improve overall efficiency.
Knorr-Bremse Aktiengesellschaft	Industrials	A3	Making transportation more efficient or safer	Knorr-Bremse is a German industrial company specialising in making brakes and safety systems for trains and trucks. Its products enable trains and trucks to be safer due to these braking systems, which allow train systems to run at speed and increase the amount of passengers or freight moved on the line.
Legal & General Group Plc	Financials	B1	Saving for the future	Legal and General manages capital and associated risks in order to provide customers with pension income and long-term savings. It benefits from the rise in defined contribution pensions and the de-risking of workplace institutional pensions. They are a beneficiary of the Saving for the future theme, helping individuals to provide for their retirement in an efficient and cost-effective way.
London Stock Exchange Group Plc	Financials	B2	Increasing financial resilience	LSE is a great example of a company that makes our financial system more resilient and more efficient. Over 80% of sales come from providing data analytics to market participants and a further 13% from its post-trade division, which makes trading and settlement more resilient and efficient.

Source: Liontrust / Factset, 31 December 2021

All Fund holdings

Company name	Sector	Sustainability Matrix	Sustainable investment theme	What this company does and how it contributes to a more sustainable economy
Molten Ventures Plc	Financials	B3	Increasing financial resilience	Molten Ventures (formerly Draper Esprit) provides early-stage capital and backing for entrepreneurial companies linked to improving resource efficiency in industrial processes, increasing financial resilience, and innovation in healthcare. It tends to nurture companies until IPO, at which point they realise their investment and recycle into new ventures.
Nasdaq, Inc.	Financials	B2	Increasing financial resilience	Nasdaq promotes a more resilient and transparent financial sector by providing an independent and transparent marketplace for financial transactions to take place. It also facilitates access to lower-cost financial products.
National Express Group Plc	Industrials	A1	Making transportation more efficient or safer	The company operates bus, coach and rail services, with an exceptional record on safety and progressive on environmental improvements. It helps to make cities less congested and air cleaner.
NVR, Inc.	Consumer Discretionary	B2	Building better cities	NVR builds high-quality homes that have better energy efficiency ratings than the average new homes built by competitors. The management team has built up a culture of focusing on efficiency and scale alongside excellent capital allocation. Similar to the UK, there is a large shortfall in the number of homes being built every year and so homebuilders play a crucial role in meeting that demand.
Oxford BioMedica Plc	Health Care	A3	Enabling innovation in healthcare	Oxford BioMedica is a leader in lentiviral vector innovation and manufacture. Lentiviral vectors are one of the core delivery mechanisms within the new healthcare therapy paradigm we have identified of Gene and Cell Therapies. We believe such therapies are set to revolutionise the healthcare landscape, as they have the potential to provide a one-off cure to underlying diseases.
Palo Alto Networks, Inc.	Information Technology	A3	Enhancing digital security	Palo Alto provides cyber security solutions for over 85,000 organisations. Its strategy is to build on the leading firewall product and move to subscription-based firewall and security as a service. This is increasingly based on consumption of data, meaning the market for security solutions will grow as data increases and more of this data is shifted into the cloud.

Source: Liontrust / Factset, 31 December 2021

All Fund holdings

Company name	Sector	Sustainability Matrix	Sustainable investment theme	What this company does and how it contributes to a more sustainable economy
Paragon Banking Group Plc	Financials	B1	Building better cities	Paragon is a specialist lender in the UK, providing finance for professional landlords and SMEs, with a long history of low impairments and high service levels. Its lending helps to support the sizeable private rental market and the development of new houses.
PayPal Holdings, Inc.	Information Technology	B1	Enhancing digital security	PayPal makes transacting online safer and easier for merchants and consumers. The company's management of major ESG issues is best in class, and so we believe they are in an excellent position to take advantage of the shift towards digital payments.
Porvair Plc	Industrials	B2	Improving the resource efficiency of industrial and agricultural processes	Porvair develops designs and manufactures specialist filtration and separation equipment.
Prudential Plc	Financials	B3	Insuring a sustainable economy	Prudential has finally restructured itself to be just the Asian life insurer we have long wanted to see. It is focused on providing Health and Protection products to the as yet largely underpenetrated region.
PTC Inc.	Information Technology	B3	Improving the resource efficiency of industrial and agricultural processes	PTC is an Industrial Design technology business for niche industrial end markets. It effectively supports the digitalisation of the manufacturing industry.
Puma SE	Consumer Discretionary	C2	Enabling healthier lifestyles	Puma is a sportswear (apparel and footwear) company based in Germany. Around a third of sales are derived from active sportswear, which enable people to take part sports, increase activity and tackle obesity. The remainder is more 'athleisure', which is not directly linked to sports.
Ringkjøbing Landbobank. Aktieselskab	Financials	B1	Increasing financial resilience	Ringkjøbing Landbobank is one of the best-run banks in the industry, serving individuals and SMEs. Customer satisfaction rates are best in class and loan losses are non-existent. They focus on profitable and niche areas such as renewable infrastructure lending or dental practices and offer a full-service banking model.

Source: Liontrust / Factset, 31 December 2021

All Fund holdings

Company name	Sector	Sustainability Matrix	Sustainable investment theme	What this company does and how it contributes to a more sustainable economy
Roche Holding AG	Health Care	A1	Enabling innovation in healthcare	The company creates truly innovative therapies that help change the course of disease. In the short to medium term, this benefits western economies who pay for it while on patent, then in the medium to long term, it benefits more developing economies as patents roll off or are not enforced.
Rotork Plc	Industrials	B2	Better monitoring of supply chains and quality control	Rotork makes actuators and other flow control devices for use in oil and gas, chemical and industrial and water applications. These devices are critical to the safe operations of these critical industries.
SDCL Energy Efficiency Income Trust Plc	Energy	A2	Improving the efficiency of energy use	The company's role in reducing emissions and bills while increasing security of energy supply, coupled with lack of power price exposure, makes it unique within the listed renewable/sustainable-infrastructure space.
Smurfit Kappa Group Plc	Materials	B1	Delivering a circular materials economy	Smurfit Kappa is the #1 card box manufacturer in Europe. It benefits from the move away from plastic to recyclable and biodegradable cardboard packaging. As a leader in recycling, forest sustainability and efficiency in operations, we forecast the company will deliver strong returns through the cycle.
Softcat Plc	Information Technology	B1	Enhancing digital security	Softcat is the UK's leading value-added reseller of IT software and equipment serving the fragmented SME market. The company's competitive advantage is based on the unique culture, which emphasises professionalism, meritocracy, competition and fun. This employee satisfaction drives best-in-class customer experience, high recurring revenues and fast increasing market share.
Splunk Inc.	Information Technology	A3	Enhancing digital security	Splunk develops and provides operational intelligence software used to monitor, report and analyse real-time machine-generated data, regardless of the source and format. Its software enables customers to search IT systems and locate and analyse complex operational IT data. The company offers on-site and remote services and provides educational programs for users and developers.

Source: Liontrust / Factset, 31 December 2021

All Fund holdings

Company name	Sector	Sustainability Matrix	Sustainable investment theme	What this company does and how it contributes to a more sustainable economy
Spotify Technology S.A.	Communication Services	B1	Encouraging sustainable leisure	Spotify is the world's dominant audio platform, with nearly 300 million monthly active users in over 70 countries around the world. Spotify has two options for users; (i) paid ad-free subscriptions (single and multi-user accounts) (ii) free ad-supported subscriptions. The Spotify platform initially offered music streaming, with nearly all the world's back catalogue of recorded music, but in the last three years, it has invested into offering podcasts on the same bundled audio platform.
St. James'S Place Plc	Financials	C2	Saving for the future	St James's Place provides a platform for a network of financial advisers to service their clients. The demand for financial advice is greater than ever yet the pool of advisers is shrinking due to complex regulatory requirements. SJP's addressable market is individuals with £50k-£5million in investable assets, of which there are 11 million such people in the UK.
Technogym S.p.A.	Consumer Discretionary	A3	Enabling healthier lifestyles	Technogym is an Italian fitness equipment manufacturer that specialises in manufacturing premium fitness equipment, gym design, fitness software, content and financing. Technogym is a leader in the global fitness equipment market with a number one market share in Europe and number two globally.
Technopro Holdings, Inc.	Industrials	B2	Improving the efficiency of energy use	Technopro delivers skilled engineers to important sectors of the global economy, driving innovation and important technological step changes that deliver better energy efficiency, improve the efficiency of the transportation sector and improve industrial processes.
The Charles Schwab Corporation	Financials	B3	Saving for the future	Schwab is ensuring investment products are available to a wide range of savers, and addressing the acute need to save for the future. Its products also address the 'knowledge gap', and products such as robo-advisers ensure advice is not just for those with high net wealth.
The Gym Group Plc	Consumer Discretionary	A1	Enabling healthier lifestyles	Gym Group is the UK's second largest gym group targeting the low-cost end of the market. Its gyms have an average membership of around 5000, typically situated in less wealthy areas of the UK with a monthly rolling membership at just over £20 on average.

Source: Liontrust / Factset, 31 December 2021

All Fund holdings

Company name	Sector	Sustainability Matrix	Sustainable investment theme	What this company does and how it contributes to a more sustainable economy
The PRS REIT Plc	Real Estate	B2	Building better cities	PRS REIT develops and provides new houses for private rental in major UK towns and cities. They offer quality accommodation to people that cannot afford, or do not want to own, property directly. The emphasis is on developing communities sitting within other types of tenure (owner occupier and affordable) and to regenerate and invest in under-served urban areas.
The Renewables Infrastructure Group Limited	Utilities	A2	Increasing electricity from renewable sources	The Renewable Infrastructure Group (TRIG) is a sustainable infrastructure fund that owns and operates renewable energy electricity generation assets. These assets are split across 79 different projects, mainly comprised of wind generation assets (both onshore and offshore) with 9% in solar and 1% in battery storage. 60% of these renewable assets are in GB with the remainder in Ireland, France, Sweden and Germany. These renewable assets have a generating capacity of 1,900 MW. This fund plays a crucial role in owning renewable assets which are displacing higher carbon alternatives off the electricity grid helping us move towards an ultra-low carbon economy.
ThermoFisher Scientific Inc.	Health Care	A3	Enabling innovation in healthcare	ThermoFisher Scientific is a key enabler of innovation within the healthcare and life science industries. It provides instruments, reagent and consumables, as well as software and services to those progressing science for academic, governmental and commercial purposes.
ThomasLloyd Energy Impact Trust Plc	Energy	A3	Increasing electricity from renewable sources	ThomasLloyd Energy Impact Trust PLC is an investment trust that funds and installs renewable energy projects in Asia. These are predominantly solar projects in India (90% of generating capacity) and some in the Philippines. They fund these renewable projects, increasing renewable electricity generation in emerging markets as well as providing security of supply for electricity in remote areas.
Trainline Plc	Consumer Discretionary	B1	Making transportation more efficient or safer	Trainline is a platform that operates a website and a mobile application allowing consumers to book rail and coach tickets digitally. Trainline helps train operators manage capacity utilisation and makes it easier for consumers to buy train tickets and manage their travel plans. By increasing the utilisation of trains Trainline is helping to manage the shift away from air and car travel.

Source: Liontrust / Factset, 31 December 2021

All Fund holdings

Company name	Sector	Sustainability Matrix	Sustainable investment theme	What this company does and how it contributes to a more sustainable economy
Triple Point Energy Efficiency Infrastructure Company Plc	Energy	A3	Improving the efficiency of energy use	Triple Point Energy is a sustainable infrastructure fund investing in energy efficiency projects in low carbon heat, social housing retrofitting and distributed renewable generation. The vast majority of revenues are contracted with little sensitivity to UK power prices. This fund invests exclusively in the UK and is a key driver of reducing: wasted energy, user energy bills and emissions.
Unilever Plc	Consumer Staples	C1	Leading ESG management	Unilever is one of the world's largest consumer goods products. The company has three divisions, (i) Personal Care, (ii) Home Care and (iii) Food and Refreshments. The company has focused on ESG leadership and recognition as developing sustainability and purpose led-brands.
US Solar Fund Plc	Energy	A3	Increasing electricity from renewable sources	US Solar is a sustainable infrastructure fund invested in solar farms in the US. It generates income from selling the electricity from solar farms to utilities and corporates through long-term power purchase agreements to reduce the volatility from power prices. They pay a dividend out from these cashflows to investors.
VeriSign, Inc.	Information Technology	B3	Enhancing digital security	VeriSign operates is a provider of domain name registry services and internet infrastructure. The company enables the security, stability, and resiliency of key internet infrastructure and services. VeriSign is a simple business, but it performs a critically important business for the global economy in operating two of the most important global internet root servers. This provides registration services and authoritative resolution for the .com and .net top-level domains.
Visa Inc.	Information Technology	B1	Enhancing digital security	Visa connects the world's financial institutions enabling efficient and safe payment transactions.
Waste Connections, Inc.	Industrials	C3	Delivering a circular materials economy	Waste Connections collects, treats and recycles predominantly municipal waste in smaller cities and rural areas of Canada and US.

Source: Liontrust / Factset, 31 December 2021

All Fund holdings

Bonds

Company name	Sector	Sustainability Matrix	Sustainable investment theme	What this company does and how it contributes to a more sustainable economy
3i Group Plc	Financials	C1	Increasing financial resilience	3i is a private equity company that invests predominantly in retail, infrastructure, healthcare, technology and industrial. They have strong responsible investment policies and firm exclusion on no-go areas.
Anglian Water (Osprey) Financing Plc	Utilities	A2	Improving management of water	Anglian Water is the fourth-largest water and sewerage companies in England & Wales by regulatory capital value. It provides water and wastewater services to around 6.3 million customers in the south east of England. Anglian Water invests significant amounts of capital expenditure to maintain and improve its network infrastructure, reducing the risk of leakage from the network, which is vitally important given the impact of climate change.
Annington Funding Plc	Real Estate	A3	Building better cities	Annington is one of the UK's largest private residential landlords, with more than 40,000 homes across the country. The company is holding to address the UK's housing crisis through the provision of affordable housing at a significant discount to market rents, while also refurbishing and redeveloping around 500 properties per annum for sale or rent at competitive prices.
Aroundtown Sa	Real Estate	C3	Building better cities	Aroundtown is the third-largest listed real estate company in Europe, with a well diversified property portfolio predominantly focused on commercial property including offices, hotels and logistics space, while also having some residential exposure through its sizeable holding in Grand City Properties. It invests in existing mid-life-cycle assets which have often been neglected, adding value through operational and redevelopment activities, these include sustainability initiatives to improve the environmental footprint of its portfolio.
Assicurazioni Generali Societa Per Azioni	Financials	C2	Saving for the future	Assicurazioni Generali offers life and non-life insurance and reinsurance throughout the world. The company offers life, health, accident, automobile, marine, aviation, transport, fire, general liability, and credit insurance and reinsurance. It is contributing to a sustainable economy through the reduction of risk and the mitigation of financial impact for the policyholder, thereby producing a safety net for people and business in times of catastrophe.

Source: Liontrust / Factset, 31 December 2021

All Fund holdings

Company name	Sector	Sustainability Matrix	Sustainable investment theme	What this company does and how it contributes to a more sustainable economy
AT&T Inc.	Communication Services	B3	Connecting people	AT&T engages in the provision of telecommunications, media and technology services, primarily to consumers and businesses in the US, while its Latin America arm provides entertainment and wireless as well. It also operates Warner Media, which produces and distributes films, television and gaming. The company is currently in the process of refocusing its primarily on communications services, which play a pivotal role in the transition to digital infrastructure, promoting digital inclusion and reducing the digital divide across underserved segments of the population.
Aviva Plc	Financials	B1	Insuring a sustainable economy	Aviva is an international insurance company that provides all classes of general and life assurance, including fire, motor, marine, aviation, and transport insurance. The company also supplies a variety of financial services, including unit trusts, stockbroking, long-term savings, and fund management.
Axa Sa	Financials	B1	Insuring a sustainable economy	AXA is an insurance company focusing on the key areas of health, property and casualty insurance. It is reducing its exposure to financial markets in favour of purer insurance products and its stated purpose is 'to act for human progress by protecting what matters'.
Banco Santander, S.A.	Financials	B3	Increasing financial resilience	Banco Santander attracts deposits and offers retail, commercial and private banking, and asset management services, offering consumer credit, mortgage loans, lease financing, factoring, mutual funds, pension funds, insurance, commercial credit and investment banking services. The group's financial resilience is supported by its geographical diversification, along with flexibility to allocate capital throughout its subsidiaries.
Barclays Plc	Financials	C3	Increasing financial resilience	Barclays is a global financial services provider engaged in retail banking, credit cards, wholesale banking, investment banking, wealth management, and investment management services. Notwithstanding its investment banking operation, it is supported by strong credit ratings and international diversification that primarily focuses on retail banking and SME lending that is supportive of economic growth.

Source: Liontrust / Factset, 31 December 2021

All Fund holdings

Company name	Sector	Sustainability Matrix	Sustainable investment theme	What this company does and how it contributes to a more sustainable economy
BNP Paribas Sa	Financials	B2	Increasing financial resilience	BNP Paribas attracts deposits and offers commercial, retail, investment, and private and corporate banking services. The Bank also provides asset management and investment advisory services to institutions and individuals in Europe, the United States, Asia, and the emerging markets. This is a well-diversified financial institution by product, with over 60% of revenues generated from higher-rated revenue streams.
Bunzl Finance Public Limited Company	Financials	C3	Portfolio construction/diversification	BUNZL provides outsourcing and distribution/logistics solutions, essentially acting as a one-stop-shop supplier for non-food consumables, sourcing and procuring products, consolidating/storing in their warehouses before delivering to customers.
Cadent Finance Plc	Utilities	C2	Improving the efficiency of energy use	Cadent Finance engages in provision of natural gas distribution services. Cadent Gas (formally National Grid Gas Distribution having fully divested from the business in 2019) is the largest regulated gas distributor in the UK, owning four of the eight regulated gas distribution networks (North West England, West Midlands, East of England and North London). Cadent is responsible for the safe and efficient transportation of gas to the customer through pipelines and equipment.
Canary Wharf Group Investment Holdings Plc	Real Estate	C2	Building better cities	Canary Wharf Group is the owner and operator of London's largest REIT portfolio, which predominantly comprises office space, owning around 45% of the Canary Wharf Estate as well as most of the development potential. The company manages its key ESG exposures well compared to peers and plays a key role in modernising and improving the environmental footprint of London's office market.
Cellnex Finance Company, S.A	Communication Services	B3	Connecting people	Cellnex is a leader in telco and broadcasting infrastructure in Europe and enables MNOs to use its infrastructure rather than have its own footprint of passive infrastructure, which can free up MNO balance sheets and increase investment in active investments. 5G will further boost network capacity and density, necessary for the continued exponential growth in data and our reliance on the digital economy.

Source: Liontrust / Factset, 31 December 2021

All Fund holdings

Company name	Sector	Sustainability Matrix	Sustainable investment theme	What this company does and how it contributes to a more sustainable economy
Clarion Funding Plc	Financials	A1	Building better cities	The mission of Clarion Housing Group is to provide good quality, affordable homes and neighbourhoods to people failed by the market. With 125,000 properties and more than 350,000 residents, they are the largest housing association in the country. They are a developer as well as a landlord - building thousands of affordable homes every year and invest in residents and their communities through Clarion Futures and their charitable foundation.
Cooperatieve Rabobank U.A.	Financials	B1	Increasing financial resilience	Cooperatieve Rabobank U.A. operates as a bank, offering personal, wholesale, international, and retail banking services. Cooperatieve Rabobank has historical ties to the food and agriculture sectors, accounting for circa 50% of corporate lending. The organisation has a stated mission of making a significant contribution to welfare and prosperity in the Netherlands as well as aiming to make a substantial contribution to feeding the world sustainably.
Coventry Building Society	Financials	B1	Building better cities	The company is exclusively UK based, with a business model that focuses on high quality, low LTV (<55%) mortgages to owner-occupied and buy to let customers in the prime residential market. Coventry is an extremely highly capitalised entity that benefits from a not for profit mutual ownership that consequently offers significantly higher deposit rates that is consistent with the savings for the future theme.
CPUK Finance Limited	Consumer Discretionary	B1	Encouraging sustainable leisure	Center Parcs (UK) Group is a leading short break holiday business in the UK and Ireland, operating through six holidays villages. The concept of Center Parcs is to bring families/friends together in a relaxed holiday environment at its UK villages. This has a positive impact due to the reduction in carbon footprint of holidaying domestically as opposed to abroad.
Deutsche Telekom International Finance B.V.	Communication Services	B3	Connecting people	DT is the German incumbent telecommunications operator, providing services in Germany, the United States and Europe through its fixed and mobile networks for consumers and businesses. The company plays a pivotal role in the transition to digital infrastructure, with the leading fiberoptic network in nearly all of its markets, which forms a critical part of a sustainable economy.
Direct Line Insurance Group Plc	Financials	B2	Insuring a sustainable economy	Direct Line Insurance Group provides personal and commercial insurance and services. The company offers a range of insurance products including automobile, home, travel, pet, property, and accident insurance.

Source: Liontrust / Factset, 31 December 2021

All Fund holdings

Company name	Sector	Sustainability Matrix	Sustainable investment theme	What this company does and how it contributes to a more sustainable economy
Dwr Cymru (Financing) Uk Plc	Utilities	A1	Improving management of water	Welsh Water is the sixth-largest water and sewerage company in England & Wales, providing high-quality drinking water and environmental services to 3.1 million customers and 110,000 business customers. Welsh Water invests significant amounts of capital expenditure to maintain and improve its network infrastructure, reducing the risk of leakage from the network, which is vitally important given the impact of climate change.
Glaxosmithkline Capital Plc	Health Care	A2	Providing affordable healthcare	GlaxoSmithKline is a large UK pharmaceutical conglomerate. It manufactures and markets branded pharmaceutical and vaccine therapeutics. It also has a Consumer Healthcare business, which is readying for a spin off in 2022.
HSBC Bank Plc	Financials	C1	Increasing financial resilience	HSBC is a global bank that provides a variety of international banking and financial services, including retail and corporate banking, trade, trusteeship, securities, custody, capital markets, treasury, private and investment banking, and insurance. Its diverse business model and high levels of capital and liquidity make this one of most financially resilient banks in the UK.
HSBC Holdings Plc	Financials	C1	Increasing financial resilience	HSBC is a global bank that provides a variety of international banking and financial services, including retail and corporate banking, trade, trusteeship, securities, custody, capital markets, treasury, private and investment banking, and insurance. Its diverse business model and high levels of capital and liquidity make this one of most financially resilient banks in the UK.
Infrastrutture Wireless Italiane S.P.A.	Communication Services	B3	Connecting people	INWIT is Italy's leading towers operator, providing passive infrastructure transmission equipment for telecommunications operators. It invests in new technologies to improve network coverage and density, in order to meet the greater capacity requirements from rising demand for mobile data services and ensure stable and reliable connections. The company plays a crucial role in accelerating the transition towards digital infrastructure, which forms a critical part of a sustainable economy.
Intercontinental Hotels Group Plc	Consumer Discretionary	C1	Leading ESG management	Intercontinental Hotels Group is one of the world's leading hotels companies. The company operates a diverse portfolio of hotel brands from high end luxury to affordable functional. IHG is committed to create a safe, inclusive environment for guests, while taking positive actions to help hotel owners in managing their impact on the environment.

Source: Liontrust / Factset, 31 December 2021

All Fund holdings

Company name	Sector	Sustainability Matrix	Sustainable investment theme	What this company does and how it contributes to a more sustainable economy
Investec Bank Plc	Financials	B2	Increasing financial resilience	Investec is an international specialist bank and asset manager, providing corporate and investment banking, private banking, securities trading, asset management, property trading and management and trade finance services. Investec has significant exposures to the segments of financial services we deem to be positive, namely SME/mortgage lending and asset & wealth management.
Legal & General Group Plc	Financials	B1	Saving for the future	Legal and General manages capital and associated risks in order to provide customers with pension income and long-term savings. It benefits from the rise in defined contribution pensions and the de-risking of workplace institutional pensions.
Liberty Living Finance Plc	Real Estate	A2	Providing education	Unite is the UK's largest owner, manager and developer of affordable, safe and secure student accommodation. Through the provision of affordable accommodation, it is enabling the provision of higher education, which in turn drives greater levels of socioeconomic mobility as well as fostering research & development and innovation.
Lloyds Banking Group Plc	Financials	B1	Increasing financial resilience	Lloyds Banking Group, through subsidiaries and associated companies, offers a range of banking and financial services in the UK, including mortgages, pensions, asset management, insurance services, corporate banking, and treasury services. As well as being the leading lender to SME/start-ups in the UK, which is a key driver of long term economic growth, Lloyds also is one of the largest mortgage providers, thus enabling home ownership.
Logicor Financing S.A R.L.	Real Estate	C3	Portfolio construction/ diversification	Logicor operates one of the largest portfolios of logistics real estate in Europe, offering 13.6 million square metres of lettable logistics space across 17 countries. Logistics real estate landlords play an increasingly pivotal role in global supply chains, particularly given the recent acceleration in the shift to e-commerce, which requires three times more warehouse and logistics space than traditional brick-and-mortar business models.

Source: Liontrust / Factset, 31 December 2021

All Fund holdings

Company name	Sector	Sustainability Matrix	Sustainable investment theme	What this company does and how it contributes to a more sustainable economy
London & Quadrant Housing Trust	Real Estate	A3	Building better cities	London & Quadrant Housing Trust provides housing facilities. The company offers affordable homes, moving home, rent, supported housing, advice, repairs, and maintenance services.
London Stock Exchange Group Plc	Financials	B2	Increasing financial resilience	LSE is a great example of a company that makes our financial system more resilient and more efficient. Over 80% of sales come from providing data analytics to market participants and a further 13% of sales come from its post-trade division, which makes trading and settlement more resilient and efficient.
M&G Plc	Financials	C3	Saving for the future	Prudential has finally restructured itself to be just the Asian life insurer we have long wanted to see. It is focused on providing Health and Protection products to the as yet largely underpenetrated region.
Motability Operations Group Plc	Industrials	B3	Enabling healthier lifestyles	Motability Operations Group provides transit services, offering finance for the acquisition of vehicles under hire purchase agreement for disabled people.
MPT Operating Partnership, L.P.	Real Estate	B4	Building better cities	Medical Properties Trust is the second-largest owner of hospital beds in the US, owning and managing a portfolio of hospitals, rehabilitation, surgical and other medical facilities, providing over 44,000 licensed beds. It provides pivotal infrastructure for the provision of healthcare, particularly in the context of aging population demographics.
National Express Group Plc	Industrials	A1	Making transportation more efficient or safer	The company operates bus, coach and rail services, with an exceptional record on safety and progressive on environmental improvements. It helps to make cities less congested and air cleaner.
National Grid Gas Plc	Utilities	B2	Improving the efficiency of energy use	National Grid engages in the transmission and distribution of electricity and gas to millions of customers and communities. As operator of the UK electricity grid, it plays an important role in investing to upgrade the grid to be fit for the energy transition towards an ultra-low carbon economy by enabling more renewables as well as upgrading infrastructure for electric vehicle charging points and heat pumps.

Source: Liontrust / Factset, 31 December 2021

All Fund holdings

Company name	Sector	Sustainability Matrix	Sustainable investment theme	What this company does and how it contributes to a more sustainable economy
Nationwide Building Society	Financials	B1	Building better cities	Nationwide Building Society is a UK-based mutual that provides financial services, offering saving accounts, investment and financial advice, loans, credit cards, retirement, mortgage, and insurance services. Almost all of Nationwide's loan book (94%) relates to mortgages, which we view as a positive to society. Risk management has been robust over time, with extremely low levels of loan losses and a commitment to working with clients that experience financial difficulties.
NatWest Group Plc	Financials	B2	Increasing financial resilience	NatWest is a UK-focused bank that operates retail and commercial operations, providing consumer loans, asset and invoice finances, commercial and residential mortgages, credit cards, and financial planning services, as well as life insurance. NatWest's corporate lending is focused on the areas we view as being most beneficial to sustained economic growth, namely SME lending, leasing and factoring and traditional retail banking.
Next Group Plc	Consumer Discretionary	C3	Better monitoring of supply chains and quality control	Next owns and operates retail stores offering fashionable accessories for men, women and children along with homeware items. Next is committed to reducing its environmental impact in operations and supply chain. The company has a strong focus on responsible sourcing, ensuring materials are responsibly sourced through good working conditions with respect for the environment.
NGG Finance Plc	Utilities	B2	Improving the efficiency of energy use	National Grid engages in the transmission and distribution of electricity and gas to millions of customers and communities. As operator of the UK electricity grid, it plays an important role in investing to upgrade the grid to be fit for the energy transition towards an ultra-low carbon economy by enabling more renewables as well as upgrading infrastructure for electric vehicle charging points and heat pumps.
Optivo Finance Plc	Financials	A1	Building better cities	One of the largest housing providers in the UK and a member of the G15 group of London's largest housing associations. Over 45,000 homes across London, the South East and the Midlands, giving 90,000 people somewhere affordable to call their own.

Source: Liontrust / Factset, 31 December 2021

All Fund holdings

Company name	Sector	Sustainability Matrix	Sustainable investment theme	What this company does and how it contributes to a more sustainable economy
Orange Sa	Communication Services	B2	Connecting people	Orange is the French incumbent telecommunications provider, operating mobile and fixed network services, but also has a wider global footprint including Africa, the Middle East and other European countries. It invests heavily in R&D, aiming to expand its fiber and mobile networks, accelerating the transition towards digital infrastructure. Digital infrastructure is a critical part of a sustainable economy, promoting digital inclusion and reducing the digital divide across underserved segments of the population
Orsted A/S	Utilities	B1	Increasing electricity from renewable sources	Ørsted engages in the provision of renewable energy solutions and is the world's largest developer and operator of offshore wind. Ørsted has firmly embraced the energy transition, transforming its business over the last decade to becoming the global leader in offshore wind.
Pension Insurance Corporation Plc	Financials	B2	Saving for the future	Pension Insurance Corp. Plc provides risk management solutions and insurance products. The firm offers pension insurance buyouts, buy-ins, and longevity insurance solutions. Its clients include companies, multinationals, and the public sector. Contributing to a sustainable economy by de-risking clients pension portfolio and assisting clients saving for their future. Also contributing to a sustainable economy through the adoption of more responsible investment policies.
Phoenix Group Holdings Plc	Financials	B3	Insuring a sustainable economy	Phoenix Group Holdings operates as a holding company. The company, through its subsidiaries, provides life insurance and pension funds services and is contributing to a sustainable economy by de-risking clients' pension portfolio and assisting them saving for their future.
Places For People Homes Limited	Real Estate	A2	Building better cities	Places for People provides housing facilities. The Company owns and manages over 209,000 properties, with an average discount to market rent of 40-50%.

Source: Liontrust / Factset, 31 December 2021

All Fund holdings

Company name	Sector	Sustainability Matrix	Sustainable investment theme	What this company does and how it contributes to a more sustainable economy
Realty Income Corporation	Real Estate	C3	Portfolio construction/diversification	Realty Income Corporation owns a portfolio of over 6,600 commercial properties across the US, UK and Puerto Rico, predominantly focused on retail properties. The company's portfolio is centred around non-discretionary consumer, providing societal benefits through enabling the provision of essential goods and services at low price points.
RI Finance Bonds No. 4 Plc	Financials	B3	Saving for the future	Royal London Mutual Insurance Society,Limited (The) provides insurance services. The Company offers life assurance, existing policies details, funeral planning, pensions, wealth management, home, and car insurance. Royal London Mutual Insurance Society serves customers in the United Kingdom. Contributing to a sustainable economy through the reduction of risk and the mitigation of financial impact for the policy holder, thereby producing a safety net for people and business in times of catastrophe. Also contributing to a sustainable economy through the adoption of more responsible investment policies and assisting people save for their future.
Severn Trent Utilities Finance Plc.	Utilities	A1	Improving management of water	Severn Trent engages in the provision of clean water and waste water treatment services and develops renewable energy solutions. It aims to provide clean and safe drinking water to its customers and is committed to invest £6.6bn over the next AMP, on new and existing pipes, treatment works and reservoirs.
Southern Gas Networks Plc	Utilities	C2	Improving the efficiency of energy use	Scotia Gas Networks is one of the UK's largest gas distribution networks, providing natural gas services to 5.9 million customers, operating across Scotland, Southern England and Northern Ireland. It owns and operates two of the eight UK gas distribution networks, Southern Gas Networks and Scotland Gas Networks. They continue to make significant investments in their network to maintain reliability and safety, and to ensure network compatibility for developments in green gas (hydrogen).
Southern Housing Group Limited	Financials	A4	Building better cities	Southern Housing Group operates as a non-profit housing authority, providing housing facilities with a housing portfolio of c.30,000 properties. Its primary offering is affordable homes at significant discounts to the market to those need them most.

Source: Liontrust / Factset, 31 December 2021

All Fund holdings

Company name	Sector	Sustainability Matrix	Sustainable investment theme	What this company does and how it contributes to a more sustainable economy
SP Transmission Plc	Utilities	C2	Increasing electricity from renewable sources	Iberdrola is a leading global utility, engaging in the generation, distribution, trading, and marketing of electricity. A further investment of euro75bn over the next five years will see a doubling of Iberdrola's renewable energy capacity, accelerating the move towards a low carbon economy.
SSE Plc	Utilities	B2	Increasing electricity from renewable sources	SSE engages in the generation, transmission, distribution, and supply of electricity. It operates through the following segments: Networks, Retail, and Wholesale.
Standard Chartered Plc	Financials	C2	Increasing financial resilience	Standard Chartered is an international banking group operating principally in Asia, Africa, and the Middle East offering products and services in the personal, consumer, corporate, institutional and treasury areas. It specialises in facilitating domestic and international trade in over 60 countries, including a number of under-banked emerging market countries, thus contributing to the economic growth profile across the globe.
Stichting Ak Rabobank Certificaten	Financials	B1	Increasing financial resilience	Cooperatieve Rabobank U.A. operates as a bank, offering personal, wholesale, international, and retail banking services. Cooperatieve Rabobank has historical ties to the food and agriculture sectors, accounting for circa 50% of corporate lending. The organisation has a stated mission of making a significant contribution to welfare and prosperity in the Netherlands as well as aiming to make a substantial contribution to feeding the world sustainably.
Student Finance Plc	Real Estate	A4	Providing education	Student Finance PLC is part of the wider Student Roost Group, the third largest owner/operator of Purpose Built Student Accommodation in the UK, providing affordable, safe and secure accommodation for 24,000 students across the UK. Their role is critical in enabling the provision of higher education to a broader spectrum of prospective students, which in turn fuels higher levels of socioeconomic mobility, as well as fostering research & development and innovation.

Source: Liontrust / Factset, 31 December 2021

All Fund holdings

Company name	Sector	Sustainability Matrix	Sustainable investment theme	What this company does and how it contributes to a more sustainable economy
Swiss Re Finance (Luxembourg) S.A.	Financials	B1	Insuring a sustainable economy	Swiss Re offers reinsurance, insurance, and insurance linked financial market products. The company offers automobile, liability, accident, engineering, marine, aviation, life, and health insurance. Swiss Re also manages fixed-income and equity investments for itself and other insurance companies. Contributing to a sustainable economy through the reduction of risk and the mitigation of financial impact for the policyholder, thereby producing a safety net for people and business in times of catastrophe.
Telecom Italia Finance S.A.	Communication Services	B3	Connecting people	Telecom Italia is the Italian incumbent telecommunications operator, providing communications and ICT solutions across its resilient mobile and fixed networks for retail and wholesale customers in Italy and Brazil. The company plays a crucial role in accelerating the transition towards digital infrastructure, which forms a critical part of a sustainable economy.
Telefonica Emisiones, S.A.U.	Communication Services	B3	Connecting people	Telefonica is the Spanish incumbent telecommunications operator but also has a broader global footprint with over 345 million customers worldwide, across Spain, Hispanoamerica, Germany, Brazil and the UK. Its presence in emerging markets provides crucial digital infrastructure in countries where reliable physical infrastructure is absent, enabling economic growth and reducing the digital divide.
The Unite Group Plc	Real Estate	A2	Providing education	Unite is the UK's largest owner, manager and developer of affordable, safe and secure student accommodation. Through the provision of affordable accommodation, it is enabling the provision of higher education, which in turn drives greater levels of socioeconomic mobility as well as fostering research & development and innovation.
United Utilities Water Finance Plc	Utilities	A2	Improving management of water	United Utilities Group covers the North West of England, providing water and sewerage services to domestic and business customers. UU invests significant amounts of capital expenditure to maintain and improve its network infrastructure, reducing the risk of leakage from the network, which is vitally important given the impact of climate change.

Source: Liontrust / Factset, 31 December 2021

All Fund holdings

Company name	Sector	Sustainability Matrix	Sustainable investment theme	What this company does and how it contributes to a more sustainable economy
Verizon Communications Inc.	Communication Services	B2	Connecting people	Verizon is one of the world's largest providers of communications products and services to consumers and businesses, providing consumer wireless and wireline communications services, video and data services, and security and managed network services, helping people to stay connected and conduct businesses across the globe. The company plays a pivotal role in the transition towards digital infrastructure, with the leading 5G network in the US, which forms a critical part of a sustainable economy.
Vodafone Group Public Limited Company	Communication Services	B1	Connecting people	Vodafone is one of the largest telecommunications operators globally. It serves consumers and businesses, providing mobile, fixed line, voice and converged services as well as ICT solutions. The company plays a crucial role in facilitating the transition towards digital infrastructure, an essential component of a more sustainable economy.
Whitbread Group Plc	Consumer Discretionary	C2	Encouraging sustainable leisure	Whitbread engages in the operation of a chain of hotels, restaurants, and coffee shops. It operates through the Premier Inn segment, which provides services in relation to accommodation and food. Its brands include Premier Inn, Beefeater, Table Table, Brewers Fayre, Cookhouse & Pub, and Thyme.
Yorkshire Building Society	Financials	B2	Building better cities	Yorkshire Building Society provides banking services, offering offering saving accounts, mortgages, savings, insurance, life plans, credit cards, loans, and travel products. Its financial resilience is supported by its not for profit mutual structure that incentivises management to follow a lower-risk culture and de-emphasises profitability measures. The company and has developed products specifically accommodate first time buyers, new build mortgages and Help to Buy mortgages.
Yorkshire Water Finance Plc	Utilities	A2	Improving management of water	Kelda Group provides water and sewerage services to domestic and business customers across Yorkshire. Its main subsidiary is Yorkshire Water, which invests significant amounts of capital expenditure in its network to continue to supply safe drinking water to a growing population, whilst minimising their impact on the environment.

Source: Liontrust / Factset, 31 December 2021

All Fund holdings

Company name	Sector	Sustainability Matrix	Sustainable investment theme	What this company does and how it contributes to a more sustainable economy
Zurich Finance (Ireland) Designated Activity Company	Financials	B1	Insuring a sustainable economy	Zurich Insurance Group provides insurance-based financial services. The company offers general and life insurance products and services for individuals, small businesses, commercial enterprises, mid-sized and large corporations, and multinational companies, contributing to a sustainable economy through the reduction of risk and the mitigation of financial impact for policyholders.
Liontrust Sustainable Future Corporate Bond Fund				
CASH & DERIVATIVES				

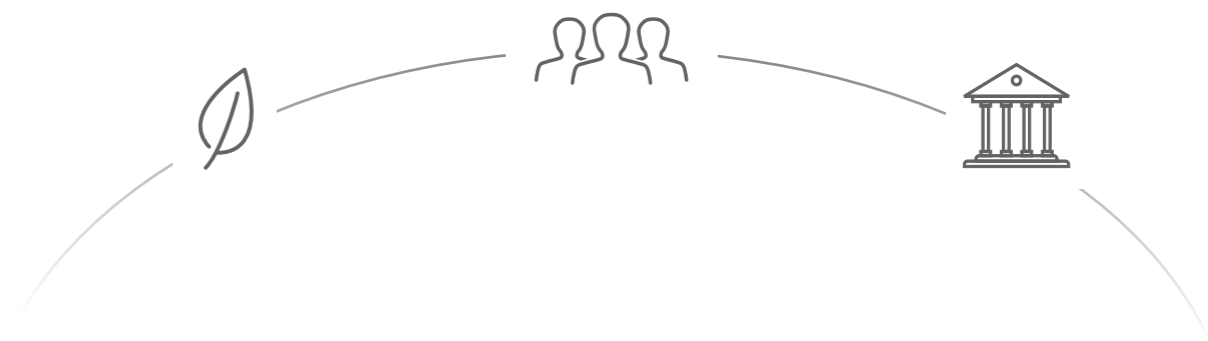
Additional ESG metrics

We have committed to disclose additional ESG data for investors in the SF Funds. The following data relating to social, governance and human rights metrics has been requested by investors or sustainability labels. We have engagement and voting policies designed to improve the social, governance, environmental and human rights aspects for the companies in which the fund invests.

Data availability is improving. For example, in the case of staff turnover, where data availability was as low as 20-25% when we first started disclosing this in 2019, it has now nearly doubled. Our engagement priority is to encourage companies to participate in the Workforce Disclosure Initiative, which aims to target companies to report more information on how they manage staff and we believe is contributing to this increased disclosure on social metrics.

For human rights, we use data on the United Nations Global Compact as a proxy. The UN Global Compact is a set of principles to minimise unintended negative impacts in terms of harm to the environment and society and includes a significant amount relating to labour rights and human rights.

We have committed to disclose additional data related to the sustainability aspects of the fund, which we will disclose as part of our reporting cycle every six months.



Additional ESG metrics

Social: staff turnover

	Social: staff turnover	Data coverage	
		% weight	Number of companies
Liontrust SF Cautious Managed Fund	3.7%	38.9%	35.1%
Benchmark: asset weighted conventional	3.6%	38.4%	39.0%
Fund relative to benchmark	0.1%		

Governance: % women on board

	% women on board	Data coverage	
		% weight	By number
Liontrust SF Cautious Managed Fund	29.4%	86.7%	83.7%
Benchmark: asset weighted conventional	33.1%	93.9%	93.4%
Fund relative to benchmark	-3.7%		

Governance: <30% women on board

	<30% women on board	Data coverage	
		% weight	By number
Liontrust SF Cautious Managed Fund	23.8%	86.7%	83.7%
Benchmark: asset weighted conventional	22.3%	93.9%	93.4%
Fund relative to benchmark	1.5%		

Governance: number of women on board

	Number of women on board	Data coverage	
		% weight	By number
Liontrust SF Cautious Managed Fund	3.14	86.7%	83.7%
Benchmark: asset weighted conventional	3.89	93.9%	93.4%
Fund relative to benchmark	-0.75		

Source: MSCI ESG Manager as 31 December 2021

Additional ESG metrics

Governance: board independence

	%Independent board	Data coverage		Proportion with <50% independent board (by weight)
		% weight	By number	
Liontrust SF Cautious Managed Fund	67.5%	86.4%	83.4%	4.4%
Benchmark: asset weighted conventional	74.6%	93.9%	93.4%	4.0%
Fund relative to benchmark	-7.1%			

Governance: Joint CEO & Chairman

	Joint CEO & Chairman	Data coverage	
		% weight	By number
Liontrust SF Cautious Managed Fund	11.8%	87.6%	85.0%
Benchmark: asset weighted conventional	20.3%	94.2%	93.9%
Fund relative to benchmark	-8.5%		

Human Rights: UN Global Compact Signatory

	% Signatories to UN Global Compact	Data coverage	
		% weight	By number
Liontrust SF Cautious Managed Fund	34.4%	73.0%	68.5%
Benchmark: asset weighted conventional	48.9%	90.7%	89.2%
Fund relative to benchmark	-14.5%		

Human Rights: UN Global Compact Status

	Pass	Watch List	Fail
Liontrust SF Cautious Managed Fund	97.4%	2.6%	0.0%
Benchmark: asset weighted conventional	85.9%	12.7%	1.4%
Fund relative to benchmark	11.4%	-10.0%	-1.4%

Source: MSCI ESG Manager as 31 December 2021

Key risks

Past performance is not a guide to future performance. The value of an investment and the income generated from it can fall as well as rise and is not guaranteed. You may get back less than you originally invested.

Disclaimer

This document is issued by Liontrust Fund Partners LLP (2 Savoy Court, London WC2R 0EZ), authorised and regulated in the UK by the Financial Conduct Authority (FRN 518165) to undertake regulated investment business. It should not be construed as advice for investment in any product or security mentioned, an offer to buy or sell investments mentioned, or a solicitation to purchase securities in any company or investment product. Examples of funds are provided for general information only to demonstrate our investment philosophy. The investment being promoted is for units in a fund, not directly in the underlying assets. **ESG Risk:** there may be limitations to the availability, completeness or accuracy of ESG information from third-party providers, or inconsistencies in the consideration of ESG factors across different third party data providers, given the evolving nature of ESG.

This is a marketing communication. The document contains information and analysis that is believed to be accurate at the time of publication, but is subject to change without notice. While care has been taken in compiling the content of this document, no representation or warranty, express or implied, is made by Liontrust as to its accuracy or completeness, including for external sources (which may have been used) which have not been verified.

Before making an investment, you should read the relevant Prospectus and the Key Investor Information Document (KIID), which provide full product details including investment charges and risks. These documents can be obtained, free of charge, from www.liontrust.co.uk or direct from Liontrust. If you are not a professional investor please consult a regulated financial adviser regarding the suitability of such an investment for you and your personal circumstances. 2022.03



Liontrust uses Carbon Balanced Paper to reduce the carbon impacts of all our printed communications. This reduces Liontrust's carbon footprint and has a positive impact on carbon change. www.carbonbalancedpaper.com

